

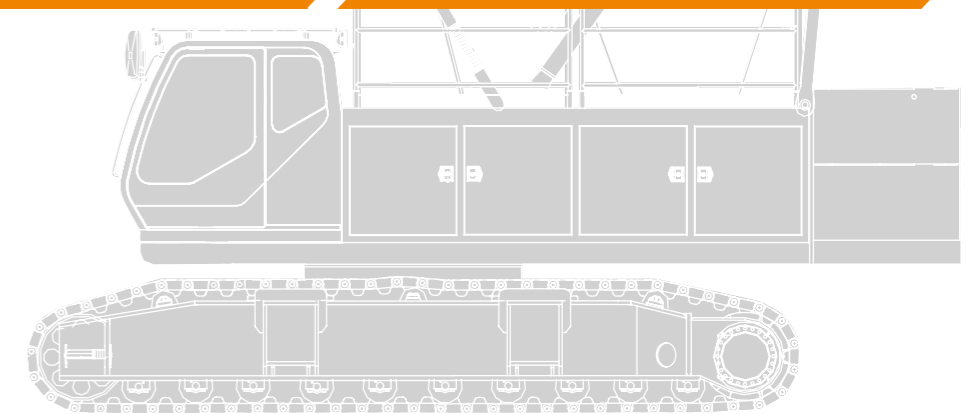


Vision creates future



CRAWLER CRANE

CRAWLER CRANE OPERATOR'S MANUAL



OPERATOR'S MANUAL

Zoomlion Heavy Industry Science and Technology Co., Ltd

Add: Quantang Industrial Park, No. 1636, 2nd Yuanda Road, Economic and
Technological Development Zone, Changsha, Hunan Province, China.

PC: 410131

www.zoomlion.com

Zoomlion Heavy Industry Science and Technology Co., Ltd.



ZCC1100H Crawler Crane Lifting Capacity Chart

Edition 1 9, 2014

To Users

Zoomlion appreciates your selection of ZOOMLION crawler crane for your application.

No one should operate the crane unless they read and understand the information in this manual.

This manual contains the instructions and data on the safety and operation of the crawler crane. Follow the operation procedures to make sure that your machine operates at MAXIMUM EFFICIENCY. The operator must keep this manual in the cab of the crane.

If there is anything in the manual that is not clear or you do not understand, please contact our service engineer. We (Zoomlion) are NOT responsible for damages from an operator who does not obey the instructions in the *Lifting Capacity Chart for Crawler Crane*.

The *Lifting Capacity Chart for Crawler Crane* is an important part of the crane. If the crane becomes the property of a different person, make sure that the manual stays in the cab of the crane.

The data (data, specifications, illustrations) in this manual is for cranes in production at the time of this manual's publication. We reserve the right to make changes to this manual at any time, without obligation.

The manual has been translated to be best of our knowledge. Zoomlion assumes no liability for translation errors. The Chinese version of the *Lifting Capacity Chart for Crawler Crane* is solely applicable for factual accuracy.

Thank you!

Mobile Crane Branch Company of Zoomlion Heavy Industry Science and Technology Co., Ltd.

Copyright

Under the copyright laws, this manual may not be copied, photocopied, reproduced, translated, or reduced to any electronic medium or machine readable form, in whole or part, without the prior written consent of Zoomlion Heavy Industry Science and Technology Co., Ltd.

Copyright © 20XX, Zoomlion Heavy Industry Science and Technology Co., Ltd.

All rights reserved.

Contents

To Users	I
Contents	II
Chapter 1 Important Notes	1-1
Chapter 2 Lifting Capacity on S-1/S-2/S-3A Boom	2-1
Lifting capacity on S-1 boom.....	2-1
Lifting capacity on S-2 boom.....	2-3
Lifting capacity on S-3A boom.....	2-12
Chapter 3 Lifting Capacity on SF-1/SF-2 Boom	3-1
Lifting capacity on SF-1 boom.....	3-1
Lifting capacity on SF-2 boom.....	3-10
Chapter 4 Lifting Capacity on S-3 boom	4-1
Lifting capacity on S-3 boom.....	4-1
Chapter 5 Lifting Capacity on SA boom	5-1
Lifting capacity on SA boom.....	5-1



Lifting Capacity Chart for Crawler Crane

Chapter 1 Important Notes



Important Notes

1. As an important part of the crane, please keep the manual with you all the time!
2. The value given in the lifting capacity chart is the permissible maximum lifting capacity, which is obtained from calculation when the load is suspended (according to the standard ASME/ANSI B30.5). The value can not exceed 75% of the minimum overturning lifting capacity when the crane is on firm and flat ground. The operator should restrict or reduce the lifting capacity of the crane basing on adverse conditions (for example, soft or uneven ground, different leveling conditions of the ground, influence of the wind force, side load and swinging, lifting operation by more than one crane). If possible, make the foundation according to higher requirements to ensure safety coefficient.
3. Except assembly configuration (SA), the lifting capacity in all other configurations is obtained when the crane is working with 61740 Lbs (28t) rear counterweight and 22050lbs (10t) central counterweight in 360° range.
4. The crawler carriers of the crane are extended completely.
5. Do not lift a load in the area which is not in the lifting capacity range, otherwise the crane may topple over or be damaged.
6. The value in the chart is the maximum lifting capacity of the crane, including the weight of lifting device, hook, wire rope at the end of hook and so on. And the weight of wire rope is calculated as 2.0Lbs/ft (3kg/m).
7. The value in bold is the lifting capacity determined by the strength of the machine, while the value that is not in bold is the lifting capacity determined by the stability of the machine.
8. The sign “*” in the chart indicates that the load capacity of the crane can be completed with the help of special equipment.
9. The sign “*/*” in the chart indicates “lifting capacity/radius”.



Lifting Capacity Chart for Crawler Crane

Chapter 2 Lifting Capacity on S-1/S-2/S-3A Boom



Table 2-1 Lifting capacity on S-1 boom

Unit: kip (ton)

Radius ft(m)	Main boom length ft(m)									Radius ft(m)
	42'8" (13)	52'6" (16)	62'4" (19)	72'3" (22)	82' (25)	91'11" (28)	101'9" (31)	111'6" (34)	121'5" (37)	
10'6" (3.2)	220.5* (100)*									10'6" (3.2)
12 (3.7)	193.2 (87.6)									12 (3.7)
13 (4)	179.9 (81.6)									13 (4)
14 (4.3)	171.1 (77.6)									14 (4.3)
15 (4.6)	161.2 (73.1)	159.0 (72.1)								15 (4.6)
16 (4.9)	151.9 (68.9)	151.7 (68.8)	146.0 (66.2)							16 (4.9)
17 (5.2)	142.9 (64.8)	142.4 (64.6)	138.7 (62.9)							17 (5.2)
18 (5.5)	134.9 (61.2)	134.3 (60.9)	131.4 (59.6)	131.4 (59.6)						18 (5.5)
19 (5.8)	127.9 (58)	127.2 (57.7)	126.1 (57.2)	124.1 (56.3)						19 (5.8)
20 (6.1)	120.2 (54.5)	121.1 (54.9)	120.2 (54.5)	119.7 (54.3)	116.2 (52.7)					20 (6.1)
25 (7.6)	89.3 (40.5)	89.1 (40.4)	89.1 (40.4)	88.8 (40.3)	88.8 (40.3)	88.6 (40.2)	88.4 (40.1)	88.2 (40.0)		25 (7.6)
30 (9.1)	69.5 (31.5)	69.2 (31.4)	69.0 (31.3)	68.8 (31.2)	68.8 (31.2)	68.6 (31.1)	68.4 (31.0)	68.1 (30.9)	67.9 (30.8)	30 (9.1)
35 (10.7)	55.8 (25.3)	55.6 (25.2)	55.3 (25.1)	55.3 (25.1)	55.1 (25.0)	54.9 (24.9)	54.7 (24.8)	54.5 (24.7)	54.2 (24.6)	35 (10.7)
40 (12.2)	47.0 (21.3)	46.7 (21.2)	46.7 (21.2)	46.5 (21.1)	46.3 (21.0)	46.1 (20.9)	45.9 (20.8)	45.6 (20.7)	45.4 (20.6)	40 (12.2)
50 (15.2)		35.3 (16)	35.1 (15.9)	35.1 (15.9)	34.6 (15.7)	34.6 (15.7)	34.4 (15.6)	34.2 (15.5)	34.0 (15.4)	50 (15.2)
60 (18.3)			28.9/57 (13.1/17.4)	27.6 (12.5)	27.3 (12.4)	27.1 (12.3)	26.9 (12.2)	26.7 (12.1)	26.5 (12.0)	60 (18.3)
70 (21.3)				24.5/65 (11.1/19.8)	22.5 (10.2)	22.3 (10.1)	22.1 (10.0)	21.8 (9.9)	21.6 (9.8)	70 (21.3)
80 (24.4)					20.1/75 (9.1/22.9)	18.5 (8.4)	18.3 (8.3)	18.1 (8.2)	17.9 (8.1)	80 (24.4)
90 (27.4)							15.7 (7.1)	15.4 (7.0)	15.2 (6.9)	90 (27.4)
100 (30.5)								13.2 (6.0)	13.0 (5.9)	100 (30.5)
110 (33.5)									11.2 (5.1)	110 (33.5)

S-1/S-2/S-3A
Boom configurations

Table 2-1 Lifting capacity on S-1 boom

Unit: kip (ton)

Radius ft(m)	Main boom length ft(m)										Radius ft(m)
	131'3" (40)	141'2" (43)	150'11" (46)	160'10" (49)	170'8" (52)	180'5" (55)	190'4" (58)	200'2" (61)	210' (64)	219'10" (67)	
30 (9.1)	67.7 (30.7)	67.7 (30.7)									30 (9.1)
35 (10.7)	54.2 (24.6)	53.8 (24.4)	49.6 (22.5)	41.9 (19)	40.1 (18.2)						35 (10.7)
40 (12.2)	45.2 (20.5)	45.0 (20.4)	44.8 (20.3)	40.1 (18.2)	38.4 (17.4)	33.7 (15.3)	31.3 (14.2)				40 (12.2)
50 (15.2)	33.7 (15.3)	33.5 (15.2)	33.3 (15.1)	33.1 (15.0)	32.9 (14.9)	30.2 (13.7)	29.8 (13.5)	27.3 (12.4)	26.2 (11.9)	26.2 (11.9)	50 (15.2)
60 (18.3)	26.2 (11.9)	26.0 (11.8)	25.8 (11.7)	25.6 (11.6)	25.4 (11.5)	25.1 (11.4)	24.9 (11.3)	24.7 (11.2)	24.5 (11.1)	23.6 (10.7)	60 (18.3)
70 (21.3)	21.4 (9.7)	21.2 (9.6)	20.9 (9.5)	20.7 (9.4)	20.5 (9.3)	20.3 (9.2)	20.1 (9.1)	19.9 (9.0)	19.4 (8.8)	19.1 (8.7)	70 (21.3)
80 (24.4)	17.6 (8.0)	17.4 (7.9)	17.2 (7.8)	17.0 (7.7)	16.8 (7.6)	16.5 (7.5)	16.3 (7.4)	15.8 (7.2)	15.7 (7.1)	15.7 (7.1)	80 (24.4)
90 (27.4)	15.0 (6.8)	14.8 (6.7)	14.6 (6.6)	14.3 (6.5)	14.1 (6.4)	13.9 (6.3)	13.7 (6.2)	13.2 (6)	13.0 (5.9)	12.8 (5.8)	90 (27.4)
100 (30.5)	12.8 (5.8)	12.6 (5.7)	12.3 (5.6)	12.1 (5.5)	11.9 (5.4)	11.7 (5.3)	11.5 (5.2)	11.0 (5.0)	10.8 (4.9)	10.6 (4.8)	100 (30.5)
110 (33.5)	11.2 (5.1)	10.8 (4.9)	10.6 (4.8)	10.4 (4.7)	10.1 (4.6)	9.9 (4.5)	9.7 (4.4)	9.3 (4.2)	9.0 (4.1)	8.8 (4.0)	110 (33.5)
120 (36.6)	10.1/115 (4.6/35.1)	9.3 (4.2)	9.0 (4.1)	8.8 (4.0)	8.6 (3.9)	8.3 (3.8)	8.2 (3.7)	7.9 (3.6)	7.7 (3.5)	7.5 (3.4)	120 (36.6)
130 (39.6)		8.6/125 (3.9/38.1)	7.9 (3.6)	7.7 (3.5)	7.5 (3.4)	7.3 (3.3)	7.1 (3.2)	6.6 (3.0)	6.4 (2.9)	6.2 (2.8)	130 (39.6)
140 (42.7)			7.3/135 (3.3/41.1)	6.6 (3.0)	6.4 (2.9)	6.1 (2.8)	5.9 (2.7)	5.7 (2.6)	5.5 (2.5)	5.1 (2.3)	140 (42.7)
150 (45.7)					5.5 (2.5)	5.3 (2.4)	5.1 (2.3)	4.9 (2.2)	4.6 (2.1)	4.2 (1.9)	150 (45.7)
160 (48.8)						4.6 (2.1)	4.4 (2)	4.0 (1.8)	3.7 (1.7)	3.5 (1.6)	160 (48.8)
170 (51.8)							3.7 (1.7)	3.3 (1.5)	3.1 (1.4)	2.9 (1.3)	170 (51.8)
180 (54.9)								2.9/175 (1.3/53.4)	2.4 (1.1)	2.2 (1.0)	180 (54.9)

Table 2-2 Lifting capacity on S-2 boom

Unit: kip (ton)

Main boom length ft(m)	101'9"(31)						Main boom length ft(m)
Fixed jib length ft(m)	19'8" (6)		39'4" (12)		59'1" (18)		Fixed jib length ft(m)
Radius ft(m)	Fixed jib angle (°)		Fixed jib angle (°)		Fixed jib angle (°)		Radius ft(m)
	10	30	10	30	10	30	
30 (9.1)	64.3 (29.1)	64 (29)	63.4 (28.7)	62.7 (28.4)	62.3 (28.2)	61.2 (27.7)	30 (9.1)
35 (10.7)	51 (23.1)	50.7 (23)	49.8 (22.6)	49.4 (22.4)	48.7 (22.1)	48.1 (21.8)	35 (10.7)
40 (12.2)	42.1 (19.1)	41.9 (19)	41 (18.6)	40.8 (18.5)	39.9 (18.1)	39.2 (17.8)	40 (12.2)
50 (15.2)	30.6 (13.9)	30.4 (13.8)	29.8 (13.5)	29.3 (13.3)	28.7 (13)	28.2 (12.8)	50 (15.2)
60 (18.3)	23.2 (10.5)	23.2 (10.5)	22.3 (10.1)	22.3 (10.1)	21.4 (9.7)	20.9 (9.5)	60 (18.3)
70 (21.3)	18.5 (8.4)	18.5 (8.4)	17.6 (8)	17.4 (7.9)	16.5 (7.5)	16.3 (7.4)	70 (21.3)
80 (24.4)	14.8 (6.7)	14.8 (6.7)	13.9 (6.3)	13.9 (6.3)	13 (5.9)	12.8 (5.8)	80 (24.4)
90 (27.4)	12.3 (5.6)	12.1 (5.5)	11.5 (5.2)	11.2 (5.1)	10.4 (4.7)	10.4 (4.7)	90 (27.4)

S-1/S-2/S-3A
Boom configurations

Table 2-2 Lifting capacity on S-2 boom

Unit: kip (ton)

Main boom length ft(m)	111'6"(34)						Main boom length ft(m)
Fixed jib length ft(m)	19'8" (6)		39'4" (12)		59'1" (18)		Fixed jib length ft(m)
Radius ft (m)	Fixed jib angle (°)		Fixed jib angle (°)		Fixed jib angle (°)		Radius ft (m)
	10	30	10	30	10	30	
30 (9.1)	64 (29)	63.7 (28.9)	63.1 (28.6)	62.6 (28.4)	62 (28.1)	61.1 (27.7)	30 (9.1)
35 (10.7)	50.7 (23)	50.5 (22.9)	49.8 (22.6)	49.4 (22.4)	48.7 (22.1)	47.8 (21.7)	35 (10.7)
40 (12.2)	41.9 (19)	41.7 (18.9)	41 (18.6)	40.6 (18.4)	39.9 (18.1)	39.2 (17.8)	40 (12.2)
50 (15.2)	30.4 (13.8)	30.2 (13.7)	29.5 (13.4)	29.1 (13.2)	28.4 (12.9)	28 (12.7)	50 (15.2)
60 (18.3)	22.9 (10.4)	22.9 (10.4)	22.3 (10.1)	22.1 (10)	21.2 (9.6)	20.7 (9.4)	60 (18.3)
70 (21.3)	18.3 (8.3)	18.3 (8.3)	17.4 (7.9)	17.2 (7.8)	16.5 (7.5)	16.1 (7.3)	70 (21.3)
80 (24.4)	14.6 (6.6)	14.6 (6.6)	13.9 (6.3)	13.7 (6.2)	12.8 (5.8)	12.6 (5.7)	80 (24.4)
90 (27.4)	12.1 (5.5)	11.9 (5.4)	11.2 (5.1)	11.2 (5.1)	10.4 (4.7)	10.1 (4.6)	90 (27.4)
100 (30.5)	9.9 (4.5)	9.9 (4.5)	9.0 (4.1)	9.0 (4.1)	8.2 (3.7)	8.2 (3.7)	100 (30.5)

Table 2-2 Lifting capacity on S-2 boom

Unit: kip (ton)

Main boom length ft(m)	121'5"(37)						Main boom length ft(m)
	19'8" (6)		39'4" (12)		59'1" (18)		
Fixed jib length ft(m)	Fixed jib angle (°)		Fixed jib angle (°)		Fixed jib angle (°)		Fixed jib length ft(m)
	10	30	10	30	10	30	
Radius ft (m)	Fixed jib angle (°)		Fixed jib angle (°)		Fixed jib angle (°)		Radius ft (m)
35 (10.7)	50.5 (22.9)	50.3 (22.8)	49.6 (22.5)	49.2 (22.3)	48.5 (22)	47.6 (21.6)	35 (10.7)
40 (12.2)	41.7 (18.9)	41.5 (18.8)	40.8 (18.5)	40.3 (18.3)	36.7 (18)	39 (17.7)	40 (12.2)
50 (15.2)	30.2 (13.7)	30 (13.6)	29.3 (13.3)	29.1 (13.2)	28.4 (12.9)	27.8 (12.6)	50 (15.2)
60 (18.3)	22.9 (10.4)	22.7 (10.3)	22.1 (10)	21.8 (9.9)	20.9 (9.5)	20.7 (9.4)	60 (18.3)
70 (21.3)	18.1 (8.2)	18.1 (8.2)	17.2 (7.8)	17.2 (7.8)	16.3 (7.4)	16.1 (7.3)	70 (21.3)
80 (24.4)	14.3 (6.5)	14.3 (6.5)	13.7 (6.2)	13.4 (6.1)	12.8 (5.8)	12.3 (5.6)	80 (24.4)
90 (27.4)	11.9 (5.4)	11.9 (5.4)	11.0 (5)	11.0 (5)	10.1 (4.6)	9.9 (4.5)	90 (27.4)
100 (30.5)	9.7 (4.4)	9.7 (4.4)	8.8 (4)	8.8 (4)	7.9 (3.6)	7.9 (3.6)	100 (30.5)
110 (33.5)	7.9 (3.6)	7.9 (3.6)	7.3 (3.3)	7.1 (3.2)	6.2 (2.8)	6.2 (2.8)	110 (33.5)

S-1/S-2/S-3A
Boom configurations

Table 2-2 Lifting capacity on S-2 boom

Unit: kip (ton)

Main boom length ft(m)	131'3"(40)						Main boom length ft(m)
Fixed jib length ft(m)	19'8" (6)		39'4" (12)		59'1" (18)		Fixed jib length ft(m)
Radius ft (m)	Fixed jib angle (°)		Fixed jib angle (°)		Fixed jib angle (°)		Radius ft (m)
	10	30	10	30	10	30	
35 (10.7)	50.3 (22.8)	50.0 (22.7)	49.4 (22.4)	48.9 (22.2)	48.3 (21.9)	47.6 (21.6)	35 (10.7)
40 (12.2)	41.7 (18.9)	41.4 (18.8)	40.8 (18.5)	40.4 (18.3)	39.7 (18)	39 (17.7)	40 (12.2)
50 (15.2)	30.2 (13.7)	30 (13.6)	29.3 (13.3)	29.1 (13.2)	28.4 (12.9)	27.8 (12.6)	50 (15.2)
60 (18.3)	22.7 (10.3)	22.5 (10.2)	21.8 (9.9)	21.6 (9.8)	20.9 (9.5)	20.5 (9.3)	60 (18.3)
70 (21.3)	17.9 (8.1)	17.9 (8.1)	17.0 (7.7)	17.0 (7.7)	16.1 (7.3)	15.9 (7.2)	70 (21.3)
80 (24.4)	14.3 (6.5)	14.3 (6.4)	13.4 (6.1)	13.2 (6)	12.6 (5.7)	12.3 (5.6)	80 (24.4)
90 (27.4)	11.7 (5.3)	11.7 (5.3)	10.8 (4.9)	10.8 (4.9)	9.9 (4.5)	9.7 (4.4)	90 (27.4)
100 (30.5)	9.5 (4.3)	9.5 (4.3)	8.6 (3.9)	8.6 (3.9)	7.7 (3.5)	7.7 (3.5)	100 (30.5)
110 (33.5)	7.7 (3.5)	7.7 (3.5)	7.1 (3.2)	6.8 (3.1)	6.2 (2.8)	6.0 (2.7)	110 (33.5)
115 (35.1)	6.8 (3.1)	6.8 (3.1)	6.2 (2.8)	6.2 (2.8)	5.3 (2.4)	5.3 (2.4)	115 (35.1)

Table 2-2 Lifting capacity on S-2 boom

Unit: kip (ton)

Main boom length ft(m)	141'2"(43)						Main boom length ft(m)
Fixed jib length ft(m)	19'8" (6)		39'4" (12)		59'1" (18)		Fixed jib length ft(m)
Radius ft (m)	Fixed jib angle (°)		Fixed jib angle (°)		Fixed jib angle (°)		Radius ft (m)
	10	30	10	30	10	30	
35 (10.7)	50 (22.7)	49.8 (22.6)	49.2 (22.3)	48.7 (22.1)	48.3 (21.9)	47.4 (21.5)	35 (10.7)
40 (12.2)	41.4 (18.8)	41.2 (18.7)	40.6 (18.4)	40.1 (18.2)	39.7 (18)	38.8 (17.6)	40 (12.2)
50 (15.2)	29.8 (13.5)	29.5 (13.4)	28.9 (13.1)	28.7 (13)	28 (12.7)	27.3 (12.4)	50 (15.2)
60 (18.3)	22.5 (10.2)	22.3 (10.1)	21.6 (9.8)	21.4 (9.7)	20.7 (9.4)	20.3 (9.2)	60 (18.3)
70 (21.3)	17.6 (8)	17.6 (8)	17 (7.7)	16.8 (7.6)	16.1 (7.3)	15.7 (7.1)	70 (21.3)
80 (24.4)	14.1 (6.4)	13.9 (6.3)	13.2 (6)	13 (5.9)	12.3 (5.6)	12.1 (5.5)	80 (24.4)
90 (27.4)	11.5 (5.2)	11.5 (5.2)	10.6 (4.8)	10.6 (4.8)	9.7 (4.4)	9.5 (4.3)	90 (27.4)
100 (30.5)	9.3 (4.2)	9.3 (4.2)	8.6 (3.9)	8.4 (3.8)	7.7 (3.5)	7.5 (3.4)	100 (30.5)
110 (33.5)	7.5 (3.4)	7.5 (3.4)	6.8 (3.1)	6.8 (3.1)	6 (2.7)	5.7 (2.6)	110 (33.5)
120 (36.6)	6 (2.7)	6 (2.7)	5.3 (2.4)	5.3 (2.4)	4.4 (2)	4.4 (2)	120 (36.6)
125 (38.1)	5.3 (2.4)	5.3 (2.4)	4.6 (2.1)	4.6 (2.1)	3.7 (1.7)	3.7 (1.7)	125 (38.1)

S-1/S-2/S-3A
Boom configurations

Table 2-2 Lifting capacity on S-2 boom

Unit: kip (ton)

Main boom length ft(m)	150'11"(46)						Main boom length ft(m)
Fixed jib length ft(m)	19'8" (6)		39'4" (12)		59'1" (18)		Fixed jib length ft(m)
Radius ft (m)	Fixed jib angle (°)		Fixed jib angle (°)		Fixed jib angle (°)		Radius ft (m)
	10	30	10	30	10	30	
40 (12.2)	41.2 (18.7)	41.0 (18.6)	40.4 (18.3)	39.9 (18.1)	39.5 (17.9)	38.6 (17.5)	40 (12.2)
50 (15.2)	29.8 (13.5)	29.5 (13.4)	28.9 (13.1)	28.7 (13)	28 (12.7)	27.6 (12.5)	50 (15.2)
60 (18.3)	22.3 (10.1)	22.1 (10)	21.4 (9.7)	21.2 (9.6)	20.5 (9.3)	20.1 (9.1)	60 (18.3)
70 (21.3)	17.4 (7.9)	17.4 (7.9)	16.8 (7.6)	16.5 (7.5)	15.9 (7.2)	15.4 (7)	70 (21.3)
80 (24.4)	13.9 (6.3)	13.7 (6.2)	13 (5.9)	12.8 (5.8)	12.1 (5.5)	11.9 (5.4)	80 (24.4)
90 (27.4)	11.2 (5.1)	11.2 (5.1)	10.4 (4.7)	10.4 (4.7)	9.7 (4.4)	9.5 (4.3)	90 (27.4)
100 (30.5)	9.0 (4.1)	9.0 (4.1)	8.4 (3.8)	8.1 (3.7)	7.5 (3.4)	7.3 (3.3)	100 (30.5)
110 (33.5)	7.3 (3.3)	7.3 (3.3)	6.6 (3)	6.6 (3)	5.7 (2.6)	5.5 (2.5)	110 (33.5)
120 (36.6)	5.7 (2.6)	5.7 (2.6)	5.1 (2.3)	5.1 (2.3)	4.2 (1.9)	4.2 (1.9)	120 (36.6)
130 (39.6)	4.9 (2.2)	4.9 (2.2)	4.0 (1.8)	4.0 (1.8)	3.1 (1.4)	3.1 (1.4)	130 (39.6)
135 (41.1)	4.2 (1.9)	4.2 (1.9)	3.3 (1.5)	3.3 (1.5)	2.6 (1.2)	2.4 (1.1)	135 (41.1)

 S-1/S-2/S-3A
Boom configurations

Table 2-2 Lifting capacity on S-2 boom

Unit: kip (ton)

Main boom length ft(m)	160'10"(49)						Main boom length ft(m)
Fixed jib length ft(m)	19'8" (6)		39'4" (12)		59'1" (18)		Fixed jib length ft(m)
Radius ft (m)	Fixed jib angle (°)		Fixed jib angle (°)		Fixed jib angle (°)		Radius ft (m)
	10	30	10	30	10	30	
40 (12.2)	35.9 (16.3)	35.9 (16.3)	35.3 (16)	34.8 (15.8)	34.2 (15.5)	33.5 (15.2)	40 (12.2)
50 (15.2)	29.5 (13.4)	29.3 (13.3)	28.7 (13)	28.5 (12.9)	27.8 (12.6)	27.3 (12.4)	50 (15.2)
60 (18.3)	22.1 (10)	21.8 (9.9)	21.2 (9.6)	21 (9.5)	20.3 (9.2)	19.8 (9)	60 (18.3)
70 (21.3)	17.2 (7.8)	17.2 (7.8)	16.5 (7.5)	16.3 (7.4)	15.7 (7.1)	15.2 (6.9)	70 (21.3)
80 (24.4)	13.7 (6.2)	13.5 (6.1)	12.8 (5.8)	12.8 (5.8)	11.9 (5.4)	11.7 (5.3)	80 (24.4)
90 (27.4)	11 (5)	11 (5)	10.4 (4.7)	10.2 (4.6)	9.5 (4.3)	9.3 (4.2)	90 (27.4)
100 (30.5)	8.8 (4)	8.8 (4)	8.2 (3.7)	7.9 (3.6)	7.3 (3.3)	7.1 (3.2)	100 (30.5)
110 (33.5)	7.1 (3.2)	7.1 (3.2)	6.4 (2.9)	6.4 (2.9)	5.5 (2.5)	5.5 (2.5)	110 (33.5)
120 (36.6)	5.7 (2.6)	5.5 (2.5)	4.9 (2.2)	4.9 (2.2)	4 (1.8)	4 (1.8)	120 (36.6)
130 (39.6)	4.6 (2.1)	4.6 (2.1)	3.7 (1.7)	3.7 (1.7)	3.1 (1.4)	2.9 (1.3)	130 (39.6)
140 (42.7)	3.5 (1.6)	3.5 (1.6)	2.6 (1.2)	2.6 (1.2)			140 (42.7)

Table 2-2 Lifting capacity on S-2 boom

Unit: kip (ton)

Main boom length ft(m)	170'8"(52)						Main boom length ft(m)
Fixed jib length ft(m)	19'8" (6)		39'4" (12)		59'1" (18)		Fixed jib length ft(m)
Radius ft (m)	Fixed jib angle (°)		Fixed jib angle (°)		Fixed jib angle (°)		Radius ft (m)
	10	30	10	30	10	30	
40 (12.2)	34.4 (15.6)	34.2 (15.5)	33.5 (15.2)	33.1 (15)	32.6 (14.8)	31.7 (14.4)	40 (12.2)
50 (15.2)	29.3 (13.3)	29.3 (13.3)	28.7 (13)	28.2 (12.8)	27.8 (12.6)	27.1 (12.3)	50 (15.2)
60 (18.3)	21.8 (9.9)	21.6 (9.8)	20.9 (9.5)	20.7 (9.4)	20.1 (9.1)	19.6 (8.9)	60 (18.3)
70 (21.3)	17 (7.7)	17 (7.7)	16.3 (7.4)	16.1 (7.3)	15.4 (7)	15 (6.8)	70 (21.3)
80 (24.4)	13.5 (6.1)	13.2 (6)	12.6 (5.7)	12.6 (5.7)	11.9 (5.4)	11.5 (5.2)	80 (24.4)
90 (27.4)	10.8 (4.9)	10.8 (4.9)	10.1 (4.6)	9.9 (4.5)	9.3 (4.2)	9.1 (4.1)	90 (27.4)
100 (30.5)	8.4 (3.8)	8.4 (3.8)	7.7 (3.5)	7.5 (3.4)	6.8 (3.1)	6.6 (3)	100 (30.5)
110 (33.5)	6.8 (3.1)	6.8 (3.1)	6.2 (2.8)	6.2 (2.8)	5.3 (2.4)	5.3 (2.4)	110 (33.5)
120 (36.6)	5.5 (2.5)	5.3 (2.4)	4.6 (2.1)	4.6 (2.1)	4.0 (1.8)	3.8 (1.7)	120 (36.6)
130 (39.6)	4.2 (1.9)	4.2 (1.9)	3.3 (1.5)	3.3 (1.5)	2.6 (1.2)	2.4 (1.1)	130 (39.6)
140 (42.7)	3.3 (1.5)	3.3 (1.5)	2.6 (1.2)	2.4 (1.1)			140 (42.7)
150 (45.7)	2.4 (1.1)	2.4 (1.1)					150 (45.7)

 S-1/S-2/S-3A
Boom configurations

Table 2-2 Lifting capacity on S-2 boom

Unit: kip (ton)

Main boom length ft(m)	180'5"(55)				Main boom length ft(m)
	19'8" (6)		39'4" (12)		
Fixed jib length ft(m)	Fixed jib angle (°)		Fixed jib angle (°)		Radius ft (m)
	10	30	10	30	
50 (15.2)	26.2 (11.9)	26.2 (11.9)	25.6 (11.6)	25.2 (11.4)	50 (15.2)
60 (18.3)	21.6 (9.8)	21.4 (9.7)	20.9 (9.5)	20.5 (9.3)	60 (18.3)
70 (21.3)	16.8 (7.6)	16.8 (7.6)	16.1 (7.3)	15.9 (7.2)	70 (21.3)
80 (24.4)	13.2 (6)	13 (5.9)	12.3 (5.6)	12.3 (5.6)	80 (24.4)
90 (27.4)	10.4 (4.7)	10.4 (4.7)	9.7 (4.4)	9.5 (4.3)	90 (27.4)
100 (30.5)	8.2 (3.7)	8.2 (3.7)	7.5 (3.4)	7.3 (3.3)	100 (30.5)
110 (33.5)	6.6 (3)	6.6 (3)	6 (2.7)	6 (2.7)	110 (33.5)
120 (36.6)	5.3 (2.4)	5.1 (2.3)	4.4 (2)	4.4 (2)	120 (36.6)
130 (39.6)	4.0 (1.8)	4.0 (1.8)	3.3 (1.5)	3.1 (1.4)	130 (39.6)
140 (42.7)	3.1 (1.4)	3.1 (1.4)	2.4 (1.1)	2.2 (1)	140 (42.7)
150 (45.7)	2.2 (1)	2.2 (1)			150 (45.7)

Table 2-3 Lifting capacity on S-3A boom

Unit: kip (ton)

Radius ft(m)	Main boom length ft(m)									Radius ft(m)	
	13	16	19	22	25	28	31	34	37		
10'6" (3.2)	219.4* (99.5) *										10'6" (3.2)
12 (3.7)	192 (87.1)										12 (3.7)
13 (4)	178.8 (81.1)										13 (4)
14 (4.3)	170 (77.1)	164.7 (74.7)									14 (4.3)
15 (4.6)	160.1 (72.6)	157.9 (71.6)									15 (4.6)
16 (4.9)	150.8 (68.4)	150.6 (68.3)	144.8 (65.7)								16 (4.9)
17 (5.2)	141.8 (64.3)	141.3 (64.1)	137.6 (62.4)								17 (5.2)
18 (5.5)	133.8 (60.7)	133.2 (60.4)	130.3 (59.1)	130.3 (59.1)							18 (5.5)
19 (5.8)	126.8 (57.5)	126.1 (57.2)	125 (56.7)	123 (55.8)	121.9 (55.3)						19 (5.8)
20 (6.1)	120.1 (54.5)	120 (54.4)	119 (54.0)	118.6 (53.8)	115.1 (52.2)						20 (6.1)
25 (7.6)	88.2 (40.0)	88 (39.9)	88 (39.9)	87.8 (39.8)	87.8 (39.8)	87.5 (39.7)	87.3 (39.6)	87.1 (39.5)			25 (7.6)
30 (9.1)	68.4 (31.0)	68.1 (30.9)	67.9 (30.8)	67.7 (30.7)	67.7 (30.7)	67.5 (30.6)	67.3 (30.5)	67 (30.4)	66.8 (30.3)		30 (9.1)
35 (10.7)	54.7 (24.8)	54.5 (24.7)	54.2 (24.6)	54.2 (24.6)	54 (24.5)	53.8 (24.4)	53.6 (24.3)	53.4 (24.2)	53.1 (24.1)		35 (10.7)
40 (12.2)	45.9 (20.8)	45.6 (20.7)	45.6 (20.7)	45.4 (20.6)	45.2 (20.5)	45 (20.4)	44.8 (20.3)	44.5 (20.2)	44.3 (20.1)		40 (12.2)
50 (15.2)		34.2 (15.5)	33.9 (15.4)	33.9 (15.4)	33.5 (15.2)	33.5 (15.2)	33.3 (15.1)	33.1 (15.0)	32.9 (14.9)		50 (15.2)
60 (18.3)			27.8/57 (12.6/17.4)	26.5 (12.0)	26.2 (11.9)	26 (11.8)	25.8 (11.7)	25.6 (11.6)	25.4 (11.5)		60 (18.3)
70 (21.3)				23.4/65 (10.6/19.8)	21.4 (9.7)	21.2 (9.6)	20.9 (9.5)	20.7 (9.4)	20.5 (9.3)		70 (21.3)
80 (24.4)					18.7/75 (8.5/22.9)	17.4 (7.9)	17.2 (7.8)	17 (7.7)	16.8 (7.6)		80 (24.4)
90 (27.4)							14.5 (6.6)	14.3 (6.5)	14.1 (6.4)		90 (27.4)
100 (30.5)								12.1 (5.5)	11.9 (5.4)		100 (30.5)
110 (33.5)									10.1 (4.6)		110 (33.5)

Table 2-3 Lifting capacity on S-3A boom

Unit: kip (ton)

Radius ft(m)	Main boom length ft(m)								Radius ft(m)
	40	43	46	49	52	55	58	61	
30 (9.1)	66.6 (30.2)	66.6 (30.2)							30 (9.1)
35 (10.7)	53.1 (24.1)	52.7 (23.9)	48.5 (22.0)	40.8 (18.5)	39.0 (17.7)				35 (10.7)
40 (12.2)	44.1 (20.0)	43.9 (19.9)	43.7 (19.8)	39.0 (17.7)	37.3 (16.9)	32.6 (14.8)	30.2 (13.7)		40 (12.2)
50 (15.2)	32.6 (14.8)	32.4 (14.7)	32.2 (14.6)	32.0 (14.5)	31.7 (14.4)	29.1 (13.2)	28.7 (13.0)	26.2 (11.9)	50 (15.2)
60 (18.3)	25.1 (11.4)	24.9 (11.3)	24.7 (11.2)	24.5 (11.1)	24.3 (11.0)	24.0 (10.9)	23.8 (10.8)	23.6 (10.7)	60 (18.3)
70 (21.3)	20.3 (9.2)	20.1 (9.1)	19.8 (9.0)	19.6 (8.9)	19.4 (8.8)	19.2 (8.7)	19.0 (8.6)	18.7 (8.5)	70 (21.3)
80 (24.4)	16.5 (7.5)	16.3 (7.4)	16.1 (7.3)	15.9 (7.2)	15.7 (7.1)	15.4 (7.0)	15.2 (6.9)	14.8 (6.7)	80 (24.4)
90 (27.4)	13.9 (6.3)	13.7 (6.2)	13.5 (6.1)	13.2 (6.0)	13.0 (5.9)	12.8 (5.8)	12.6 (5.7)	12.1 (5.5)	90 (27.4)
100 (30.5)	11.7 (5.3)	11.5 (5.2)	11.3 (5.1)	11.0 (5.0)	10.8 (4.9)	10.6 (4.8)	10.4 (4.7)	9.9 (4.5)	100 (30.5)
110 (33.5)	10.1 (4.6)	9.7 (4.4)	9.5 (4.3)	9.3 (4.2)	9.0 (4.1)	8.8 (4.0)	8.6 (3.9)	8.2 (3.7)	110 (33.5)
120 (36.6)	9/115 (4.1/35.1)	8.2 (3.7)	7.9 (3.6)	7.7 (3.5)	7.5 (3.4)	7.3 (3.3)	7.1 (3.2)	6.8 (3.1)	120 (36.6)
130 (39.6)		7.5/125 (3.4/38.1)	6.8 (3.1)	6.6 (3.0)	6.4 (2.9)	6.2 (2.8)	6.0 (2.7)	5.5 (2.5)	130 (39.6)
140 (42.7)			6.2/135 (2.8/41.1)	5.5 (2.5)	5.3 (2.4)	5.1 (2.3)	4.9 (2.2)	4.6 (2.1)	140 (42.7)
150 (45.7)					4.4 (2.0)	4.2 (1.9)	4.0 (1.8)	3.7 (1.7)	150 (45.7)
160 (48.8)						3.5 (1.6)	3.3 (1.5)	2.9 (1.3)	160 (48.8)
170 (51.8)							2.6 (1.2)	2.2 (1.0)	170 (51.8)
180 (54.9)								1.8/175 (0.8/53.4)	180 (54.9)



Lifting Capacity Chart for Crawler Crane

Chapter 3 Lifting Capacity on SF-1/SF-2 Boom



Table 3-1 Lifting capacity on SF-1 boom

Unit: kip (ton)

Main boom length ft(m)	101'9"(31)						Main boom length ft(m)
Fixed jib length ft(m)	19'8" (6)		39'4" (12)		59'1" (18)		Fixed jib length ft(m)
Radius ft(m)	Fixed jib angle (°)		Fixed jib angle (°)		Fixed jib angle (°)		Radius ft(m)
	10	30	10	30	10	30	
35 (10.7)	17.6 (8)						35 (10.7)
40 (12.2)	17.6 (8)	17.6 (8)	17.6 (8)				40 (12.2)
50 (15.2)	17.6 (8)	17.6 (8)	17.6 (8)		13.2 (6.0)		50 (15.2)
60 (18.3)	17.6 (8)	17.6 (8)	17.6 (8)	16.3 (7.4)	12.8 (5.8)		60 (18.3)
70 (21.3)	17.6 (8)	17.6 (8)	17.6 (8)	14.8 (6.7)	12.3 (5.6)	8.4 (3.8)	70 (21.3)
80 (24.4)	16.8 (7.6)	17.0 (7.7)	17.4 (7.9)	13.7 (6.2)	11.9 (5.4)	7.7 (3.5)	80 (24.4)
90 (27.4)	14.6 (6.6)	14.3 (6.5)	15.0 (6.8)	12.6 (5.7)	11.2 (5.1)	6.8 (3.1)	90 (27.4)
100 (30.5)	12.3 (5.6)	12.3 (5.6)	12.8 (5.8)	11.0 (5)	10.6 (4.8)	6.4 (2.9)	100 (30.5)
110 (33.5)		10.6 (4.8)	11.0 (5)	10.8 (4.9)	9.7 (4.4)	6.2 (2.8)	110 (33.5)
120 (36.6)			9.5 (4.3)	9.7 (4.4)	9.0 (4.1)	5.7 (2.6)	120 (36.6)
130 (39.6)				8.4 (3.8)	7.7 (3.5)	5.5 (2.5)	130 (39.6)
140 (42.7)					7.1 (3.2)	5.3 (2.4)	140 (42.7)
150 (45.7)						5.1 (2.3)	150 (45.7)

Table 3-1 Lifting capacity on SF-1 boom

Unit: kip (ton)

Main boom length ft(m)	111'6"(34)						Main boom length ft(m)
Fixed jib length ft(m)	19'8" (6)		39'4" (12)		59'1" (18)		Fixed jib length ft(m)
Radius ft(m)	Fixed jib angle (°)		Fixed jib angle (°)		Fixed jib angle (°)		Radius ft(m)
	10	30	10	30	10	30	
35 (10.7)	17.6 (8)						35 (10.7)
40 (12.2)	17.6 (8)						40 (12.2)
50 (15.2)	17.6 (8)	17.6 (8)	17.6 (8)		13.2 (6.0)		50 (15.2)
60 (18.3)	17.6 (8)	17.6 (8)	17.6 (8)	16.3 (7.4)	12.8 (5.8)		60 (18.3)
70 (21.3)	17.6 (8)	17.6 (8)	17.6 (8)	14.8 (6.7)	12.6 (5.7)	8.4 (3.8)	70 (21.3)
80 (24.4)	16.8 (7.6)	16.8 (7.6)	16.8 (7.6)	13.2 (6)	12.1 (5.5)	8.4 (3.8)	80 (24.4)
90 (27.4)	14.1 (6.4)	14.6 (6.6)	14.6 (6.6)	12.3 (5.6)	11.7 (5.3)	7.5 (3.4)	90 (27.4)
100 (30.5)	11.9 (5.4)	12.3 (5.6)	12.1 (5.5)	11.9 (5.4)	10.8 (4.9)	6.6 (3)	100 (30.5)
110 (33.5)	10.4 (4.7)	10.6 (4.8)	10.8 (4.9)	10.8 (4.9)	10.1 (4.6)	6.4 (2.9)	110 (33.5)
120 (36.6)		9.0 (4.1)	9.3 (4.2)	9.5 (4.3)	9.2 (4.2)	6.0 (2.7)	120 (36.6)
130 (39.6)			7.9 (3.6)	8.2 (3.7)	8.2 (3.7)	5.7 (2.6)	130 (39.6)
140 (42.7)				7.1 (3.2)	7.1 (3.2)	5.5 (2.5)	140 (42.7)
150 (45.7)					6.4 (2.9)	5.3 (2.4)	150 (45.7)
160 (48.8)						4.9 (2.2)	160 (48.8)

Table 3-1 Lifting capacity on SF-1 boom

Unit: kip (ton)

Main boom length ft(m)	121'5"(37)						Main boom length ft(m)
Fixed jib length ft(m)	19'8" (6)		39'4" (12)		59'1" (18)		Fixed jib length ft(m)
Radius ft(m)	Fixed jib angle (°)		Fixed jib angle (°)		Fixed jib angle (°)		Radius ft(m)
	10	30	10	30	10	30	
35 (10.7)	17.6 (8)						35 (10.7)
40 (12.2)	17.6 (8)						40 (12.2)
50 (15.2)	17.6 (8)	17.6 (8)	17.6 (8)				50 (15.2)
60 (18.3)	17.6 (8)	17.6 (8)	17.6 (8)	16.3 (7.4)	13.2 (6)		60 (18.3)
70 (21.3)	17.6 (8)	17.6 (8)	17.6 (8)	15.4 (7)	12.6 (5.7)	8.4 (3.8)	70 (21.3)
80 (24.4)	16.5 (7.5)	16.5 (7.5)	17.2 (7.8)	14.1 (6.4)	12.3 (5.6)	7.7 (3.5)	80 (24.4)
90 (27.4)	14.1 (6.4)	14.3 (6.5)	14.3 (6.5)	13.2 (6)	11.9 (5.4)	7.5 (3.4)	90 (27.4)
100 (30.5)	11.9 (5.4)	12.1 (5.5)	12.1 (5.5)	12.6 (5.7)	11.0 (5.0)	6.6 (3)	100 (30.5)
110 (33.5)	10.1 (4.6)	10.4 (4.7)	10.4 (4.7)	10.8 (4.9)	10.1 (4.6)	6.4 (2.9)	110 (33.5)
120 (36.6)	8.6 (3.9)	8.8 (4)	9.0 (4.1)	9.3 (4.2)	9.3 (4.2)	6.2 (2.8)	120 (36.6)
130 (39.6)			7.7 (3.5)	8.2 (3.7)	8.2 (3.7)	6.0 (2.7)	130 (39.6)
140 (42.7)			6.8 (3.1)	7.1 (3.2)	7.1 (3.2)	5.5 (2.5)	140 (42.7)
150 (45.7)					6.2 (2.8)	5.5 (2.5)	150 (45.7)
160 (48.8)					5.3 (2.4)	5.3 (2.4)	160 (48.8)

Table 3-1 Lifting capacity on SF-1 boom

Unit: kip (ton)

Main boom length ft(m)	131'3"(40)						Main boom length ft(m)
Fixed jib length ft(m)	19'8" (6)		39'4" (12)		59'1" (18)		Fixed jib length ft(m)
Radius ft(m)	Fixed jib angle (°)		Fixed jib angle (°)		Fixed jib angle (°)		Radius ft(m)
	10	30	10	30	10	30	
40 (12.2)	17.6 (8)						40 (12.2)
50 (15.2)	17.6 (8)	17.6 (8)	17.6 (8)				50 (15.2)
60 (18.3)	17.6 (8)	17.6 (8)	17.6 (8)	17.2 (7.8)	13.2 (6)		60 (18.3)
70 (21.3)	17.6 (8)	17.6 (8)	17.6 (8)	15.9 (7.2)	12.8 (5.8)		70 (21.3)
80 (24.4)	16.5 (7.5)	16.8 (7.6)	16.8 (7.6)	15.0 (6.8)	12.6 (5.7)	7.9 (3.6)	80 (24.4)
90 (27.4)	13.7 (6.2)	13.9 (6.3)	14.1 (6.4)	13.7 (6.2)	12.1 (5.5)	7.5 (3.4)	90 (27.4)
100 (30.5)	11.5 (5.2)	11.7 (5.3)	12.1 (5.5)	12.6 (5.7)	11.2 (5.1)	7.1 (3.2)	100 (30.5)
110 (33.5)	9.7 (4.4)	9.9 (4.5)	10.4 (4.7)	10.6 (4.8)	10.1 (4.6)	6.6 (3)	110 (33.5)
120 (36.6)	8.4 (3.8)	8.6 (3.9)	8.8 (4)	9.0 (4.1)	9.3 (4.2)	6.2 (2.8)	120 (36.6)
130 (39.6)	7.3 (3.3)	7.5 (3.4)	7.7 (3.5)	7.9 (3.6)	7.7 (3.5)	6.0 (2.7)	130 (39.6)
140 (42.7)			6.6 (3)	6.8 (3.1)	6.8 (3.1)	5.5 (2.5)	140 (42.7)
150 (45.7)			5.7 (2.6)	6.0 (2.7)	6.0 (2.7)	5.5 (2.5)	150 (45.7)
160 (48.8)					5.3 (2.4)	5.3 (2.4)	160 (48.8)
170 (51.8)					4.6 (2.1)	4.6 (2.1)	170 (51.8)

Table 3-1 Lifting capacity on SF-1 boom

Unit: kip (ton)

Main boom length ft(m)	141'2"(43)						Main boom length ft(m)
Fixed jib length ft(m)	19'8" (6)		39'4" (12)		59'1" (18)		Fixed jib length ft(m)
Radius ft(m)	Fixed jib angle (°)		Fixed jib angle (°)		Fixed jib angle (°)		Radius ft(m)
	10	30	10	30	10	30	
50 (15.2)	17.6 (8)		17.6 (8)				50 (15.2)
60 (18.3)	17.6 (8)	17.6 (8)	17.6 (8)	16.8 (7.6)	13.2 (6)		60 (18.3)
70 (21.3)	17.6 (8)	17.6 (8)	17.6 (8)	15.9 (7.2)	12.8 (5.8)		70 (21.3)
80 (24.4)	15.9 (7.2)	16.5 (7.5)	16.8 (7.6)	15.0 (6.8)	12.6 (5.7)	8.4 (3.8)	80 (24.4)
90 (27.4)	13.2 (6)	13.9 (6.3)	13.9 (6.3)	13.9 (6.3)	12.1 (5.5)	7.7 (3.5)	90 (27.4)
100 (30.5)	11.2 (5.1)	11.5 (5.2)	11.9 (5.4)	12.3 (5.6)	11.2 (5.1)	7.3 (3.3)	100 (30.5)
110 (33.5)	9.7 (4.4)	9.9 (4.5)	10.1 (4.6)	10.6 (4.8)	10.1 (4.6)	6.6 (3)	110 (33.5)
120 (36.6)	8.2 (3.7)	8.4 (3.8)	8.6 (3.9)	9.0 (4.1)	8.8 (4)	6.4 (2.9)	120 (36.6)
130 (39.6)	7.1 (3.2)	7.1 (3.2)	7.3 (3.3)	7.7 (3.5)	7.5 (3.4)	6.2 (2.8)	130 (39.6)
140 (42.7)	6.0 (2.7)	6.0 (2.7)	6.4 (2.9)	6.6 (3)	6.6 (3)	5.7 (2.6)	140 (42.7)
150 (45.7)			5.5 (2.5)	5.7 (2.6)	5.7 (2.6)	5.5 (2.5)	150 (45.7)
160 (48.8)			4.6 (2.1)	4.9 (2.2)	5.1 (2.3)	5.3 (2.4)	160 (48.8)
170 (51.8)					4.2 (1.9)	4.4 (2)	170 (51.8)
180 (54.9)						3.7 (1.7)	180 (54.9)

Table 3-1 Lifting capacity on SF-1 boom

Unit: kip (ton)

Main boom length ft(m)	150'11"(46)						Main boom length ft(m)
Fixed jib length ft(m)	19'8" (6)		39'4" (12)		59'1" (18)		Fixed jib length ft(m)
Radius ft(m)	Fixed jib angle (°)		Fixed jib angle (°)		Fixed jib angle (°)		Radius ft(m)
	10	30	10	30	10	30	
50 (15.2)	17.6 (8)		17.6 (8)				50 (15.2)
60 (18.3)	17.6 (8)	17.6 (8)	17.6 (8)		13.2 (6.0)		60 (18.3)
70 (21.3)	17.6 (8)	17.6 (8)	17.6 (8)	16.3 (7.4)	12.8 (5.8)		70 (21.3)
80 (24.4)	15.9 (7.2)	16.3 (7.4)	16.3 (7.4)	15.4 (7)	12.6 (5.7)	8.3 (3.8)	80 (24.4)
90 (27.4)	13.2 (6)	13.7 (6.2)	13.9 (6.3)	14.3 (6.5)	12.6 (5.7)	7.7 (3.5)	90 (27.4)
100 (30.5)	11.2 (5.1)	11.5 (5.2)	11.5 (5.2)	12.1 (5.5)	11.2 (5.1)	7.5 (3.4)	100 (30.5)
110 (33.5)	9.5 (4.3)	9.5 (4.3)	9.9 (4.5)	10.1 (4.6)	10.1 (4.6)	6.8 (3.1)	110 (33.5)
120 (36.6)	7.9 (3.6)	8.2 (3.7)	8.4 (3.8)	8.6 (3.9)	8.6 (3.9)	6.6 (3)	120 (36.6)
130 (39.6)	6.8 (3.1)	6.8 (3.1)	7.1 (3.2)	7.5 (3.4)	7.5 (3.4)	6.4 (2.9)	130 (39.6)
140 (42.7)	5.7 (2.6)	6.0 (2.7)	6.2 (2.8)	6.4 (2.9)	6.4 (2.9)	6.2 (2.8)	140 (42.7)
150 (45.7)			5.3 (2.4)	5.5 (2.5)	5.5 (2.5)	5.7 (2.6)	150 (45.7)
160 (48.8)			4.4 (2)	4.6 (2.1)	4.6 (2.1)	5.1 (2.3)	160 (48.8)
170 (51.8)			3.7 (1.7)	4.0 (1.8)	4.0 (1.8)	4.4 (2)	170 (51.8)
180 (54.9)					3.5 (1.6)	3.5 (1.6)	180 (54.9)
190 (57.9)					2.9 (1.3)	3.1 (1.4)	190 (57.9)

Table 3-1 Lifting capacity on SF-1 boom

Unit: kip (ton)

Main boom length ft(m)	160'10"(49)						Main boom length ft(m)
Fixed jib length ft(m)	19'8" (6)		39'4" (12)		59'1" (18)		Fixed jib length ft(m)
Radius ft(m)	Fixed jib angle (°)		Fixed jib angle (°)		Fixed jib angle (°)		Radius ft(m)
	10	30	10	30	10	30	
50 (15.2)	17.6 (8)	17.6 (8)	17.6 (8)				50 (15.2)
60 (18.3)	17.6 (8)	17.6 (8)	17.6 (8)		13.2 (6.0)		60 (18.3)
70 (21.3)	17.6 (8)	17.6 (8)	17.6 (8)	16.8 (7.6)	12.8 (5.8)		70 (21.3)
80 (24.4)	16.1 (7.3)	16.1 (7.3)	16.3 (7.4)	15.4 (7)	12.6 (5.7)	8.4 (3.8)	80 (24.4)
90 (27.4)	13.0 (5.9)	13.2 (6)	13.5 (6.1)	14.3 (6.5)	12.3 (5.6)	8.2 (3.7)	90 (27.4)
100 (30.5)	10.8 (4.9)	11.0 (5)	11.2 (5.1)	11.9 (5.4)	11.2 (5.1)	7.7 (3.5)	100 (30.5)
110 (33.5)	9.0 (4.1)	9.3 (4.2)	9.5 (4.3)	9.9 (4.5)	9.7 (4.4)	7.3 (3.3)	110 (33.5)
120 (36.6)	7.7 (3.5)	7.9 (3.6)	7.9 (3.6)	8.6 (3.9)	8.4 (3.8)	6.6 (3)	120 (36.6)
130 (39.6)	6.6 (3)	6.6 (3)	6.8 (3.1)	7.3 (3.3)	7.1 (3.2)	6.4 (2.9)	130 (39.6)
140 (42.7)	5.5 (2.5)	5.7 (2.6)	5.7 (2.6)	6.2 (2.8)	6.0 (2.7)	6.2 (2.8)	140 (42.7)
150 (45.7)	4.6 (2.1)	4.9 (2.2)	4.9 (2.2)	5.3 (2.4)	5.1 (2.3)	5.7 (2.6)	150 (45.7)
160 (48.8)	3.7 (1.7)	4.0 (1.8)	4.2 (1.9)	4.4 (2)	4.4 (2)	4.9 (2.2)	160 (48.8)
170 (51.8)				3.7 (1.7)	3.7 (1.7)	4.2 (1.9)	170 (51.8)
180 (54.9)					3.1 (1.4)	3.5 (1.6)	180 (54.9)
190 (57.9)					2.6 (1.2)	2.9 (1.3)	190 (57.9)

Table 3-1 Lifting capacity on SF-1 boom

Unit: kip (ton)

Main boom length ft(m)	170'8"(52)						Main boom length ft(m)
Fixed jib length ft(m)	19'8" (6)		39'4" (12)		59'1" (18)		Fixed jib length ft(m)
Radius ft(m)	Fixed jib angle (°)		Fixed jib angle (°)		Fixed jib angle (°)		Radius ft(m)
	10	30	10	30	10	30	
50 (15.2)	17.6 (8)						50 (15.2)
60 (18.3)	17.6 (8)	17.6 (8)	17.6 (8)				60 (18.3)
70 (21.3)	17.6 (8)	17.6 (8)	17.6 (8)	16.8 (7.6)	13.2 (6)		70 (21.3)
80 (24.4)	15.7 (7.1)	15.7 (7.1)	16.1 (7.3)	15.4 (7)	12.8 (5.8)	8.4 (3.8)	80 (24.4)
90 (27.4)	12.6 (5.7)	13.2 (6)	13.2 (6)	13.5 (6.1)	12.6 (5.7)	8.2 (3.7)	90 (27.4)
100 (30.5)	10.6 (4.8)	11.0 (5)	11.0 (5)	11.7 (5.3)	11.2 (5.1)	7.5 (3.4)	100 (30.5)
110 (33.5)	8.8 (4)	9.3 (4.2)	9.3 (4.2)	9.7 (4.4)	9.5 (4.3)	7.3 (3.3)	110 (33.5)
120 (36.6)	7.3 (3.3)	7.7 (3.5)	7.9 (3.6)	8.4 (3.8)	8.2 (3.7)	6.6 (3)	120 (36.6)
130 (39.6)	6.2 (2.8)	6.4 (2.9)	6.6 (3)	7.1 (3.2)	6.8 (3.1)	6.4 (2.9)	130 (39.6)
140 (42.7)	5.3 (2.4)	5.3 (2.4)	5.7 (2.6)	6.0 (2.7)	6.0 (2.7)	6.2 (2.8)	140 (42.7)
150 (45.7)	4.4 (2)	4.6 (2.1)	4.9 (2.2)	5.1 (2.3)	5.1 (2.3)	5.5 (2.5)	150 (45.7)
160 (48.8)	3.5 (1.6)	3.7 (1.7)	4.0 (1.8)	4.2 (1.9)	4.2 (1.9)	4.6 (2.1)	160 (48.8)
170 (51.8)	2.9 (1.3)	3.1 (1.4)	3.3 (1.5)	3.5 (1.6)	3.5 (1.6)	4.0 (1.8)	170 (51.8)
180 (54.9)			2.6 (1.2)	2.9 (1.3)	2.9 (1.3)	3.3 (1.5)	180 (54.9)

Table 3-1 Lifting capacity on SF-1 boom

Unit: kip (ton)

Main boom length ft(m)	180'5"(55)						Main boom length ft(m)
Fixed jib length ft(m)	19'8" (6)		39'4" (12)		59'1" (18)		Fixed jib length ft(m)
Radius ft(m)	Fixed jib angle (°)		Fixed jib angle (°)		Fixed jib angle (°)		Radius ft(m)
	10	30	10	30	10	30	
50 (15.2)	17.6 (8)						50 (15.2)
60 (18.3)	17.6 (8)	17.6 (8)	17.6 (8)				60 (18.3)
70 (21.3)	17.6 (8)	17.6 (8)	17.6 (8)	17.0 (7.7)	13.2 (6.0)		70 (21.3)
80 (24.4)	15.0 (6.8)	15.4 (7)	15.9 (7.2)	16.1 (7.3)	13.0 (5.9)		80 (24.4)
90 (27.4)	12.3 (5.6)	12.8 (5.8)	12.8 (5.8)	13.7 (6.2)	12.6 (5.7)	8.2 (3.7)	90 (27.4)
100 (30.5)	10.4 (4.7)	10.6 (4.8)	10.6 (4.8)	11.5 (5.2)	11.2 (5.1)	7.7 (3.5)	100 (30.5)
110 (33.5)	8.6 (3.9)	8.8 (4)	9.0 (4.1)	9.7 (4.4)	9.3 (4.2)	7.5 (3.4)	110 (33.5)
120 (36.6)	7.1 (3.2)	7.5 (3.4)	7.5 (3.4)	8.2 (3.7)	7.7 (3.5)	7.1 (3.2)	120 (36.6)
130 (39.6)	6.0 (2.7)	6.2 (2.8)	6.4 (2.9)	6.8 (3.1)	6.6 (3)	6.6 (3)	130 (39.6)
140 (42.7)	4.9 (2.2)	5.1 (2.3)	5.3 (2.4)	5.7 (2.6)	5.5 (2.5)	6.2 (2.8)	140 (42.7)
150 (45.7)	4.2 (1.9)	4.2 (1.9)	4.4 (2)	4.9 (2.2)	4.6 (2.1)	5.1 (2.3)	150 (45.7)
160 (48.8)	3.3 (1.5)	3.3 (1.5)	3.7 (1.7)	4.0 (1.8)	3.7 (1.7)	4.4 (2)	160 (48.8)
170 (51.8)	2.9 (1.3)	2.6 (1.2)	3.1 (1.4)	3.1 (1.4)	3.1 (1.4)	3.5 (1.6)	170 (51.8)
180 (54.9)		2.0 (0.9)	2.4 (1.1)	2.4 (1.1)	2.4 (1.1)	2.9 (1.3)	180 (54.9)
190 (57.9)				1.8 (0.8)	1.8 (0.8)	2.2 (1)	190 (57.9)

Table 3-2 Lifting capacity on SF-2 boom

Unit: kip (ton)

Main boom length ft(m)	101'9"(31)						Main boom length ft(m)
Fixed jib length ft(m)	19'8" (6)		39'4" (12)		59'1" (18)		Fixed jib length ft(m)
Radius ft(m)	Fixed jib angle (°)		Fixed jib angle (°)		Fixed jib angle (°)		Radius ft(m)
	10	30	10	30	10	30	
35 (10.7)	17.6 (8)						35 (10.7)
40 (12.2)	17.6 (8)	17.6 (8)	17.6 (8)				40 (12.2)
50 (15.2)	17.6 (8)	17.6 (8)	17.6 (8)		13.2 (6.0)		50 (15.2)
60 (18.3)	17.6 (8)	17.6 (8)	17.6 (8)	16.3 (7.4)	12.8 (5.8)		60 (18.3)
70 (21.3)	16.1 (7.3)	16.1 (7.3)	16.3 (7.4)	14.8 (6.7)	12.3 (5.6)	8.4 (3.8)	70 (21.3)
80 (24.4)	15.2 (6.9)	15.4 (7)	17.6 (7.3)	13.7 (6.2)	11.9 (5.4)	7.7 (3.5)	80 (24.4)
90 (27.4)	13 (5.9)	12.8 (5.8)	13.7 (6.2)	12.6 (5.7)	11.2 (5.1)	6.8 (3.1)	90 (27.4)
100 (30.5)	10.8 (4.9)	10.8 (4.9)	11.5 (5.2)	11.0 (5)	10.6 (4.8)	6.4 (2.9)	100 (30.5)
110 (33.5)		9.0 (4.1)	9.7 (4.4)	9.5 (4.3)	8.6 (3.9)	6.2 (2.8)	110 (33.5)
120 (36.6)			8.2 (3.7)	8.4 (3.8)	7.5 (3.4)	5.7 (2.6)	120 (36.6)
130 (39.6)				7.0 (3.2)	6.6 (3)	5.5 (2.5)	130 (39.6)
140 (42.7)					6.0 (2.7)	5.3 (2.4)	140 (42.7)
150 (45.7)						5.1 (2.3)	150 (45.7)

Table 3-2 Lifting capacity on SF-2 boom

Unit: kip (ton)

Main boom length ft(m)	111'6"(34)						Main boom length ft(m)
	19'8" (6)		39'4" (12)		59'1" (18)		
Fixed jib length ft(m)	Fixed jib angle (°)		Fixed jib angle (°)		Fixed jib angle (°)		Radius ft(m)
	10	30	10	30	10	30	
35 (10.7)	17.6 (8)						35 (10.7)
40 (12.2)	17.6 (8)						40 (12.2)
50 (15.2)	17.6 (8)	17.6 (8)	17.6 (8)		13.2 (6.0)		50 (15.2)
60 (18.3)	17.6 (8)	17.6 (8)	17.6 (8)	16.3 (7.4)	12.8 (5.8)		60 (18.3)
70 (21.3)	16.1 (7.3)	16.1 (7.3)	17.6 (7.3)	14.8 (6.7)	12.6 (5.7)	8.4 (3.8)	70 (21.3)
80 (24.4)	15.2 (6.9)	15.2 (6.9)	15.4 (7)	13.2 (6)	12.1 (5.5)	8.4 (3.8)	80 (24.4)
90 (27.4)	12.6 (5.7)	13 (5.9)	13.2 (6)	12.3 (5.6)	11.7 (5.3)	7.5 (3.4)	90 (27.4)
100 (30.5)	10.4 (4.7)	10.8 (4.9)	10.8 (4.9)	10.6 (4.8)	10.8 (4.9)	6.6 (3)	100 (30.5)
110 (33.5)	8.8 (4)	9.0 (4.1)	9.5 (4.3)	9.5 (4.3)	9.0 (4.1)	6.4 (2.9)	110 (33.5)
120 (36.6)		7.5 (3.4)	7.9 (3.6)	8.2 (3.7)	8.2 (3.7)	6.0 (2.7)	120 (36.6)
130 (39.6)			6.6 (3)	6.8 (3.1)	7.1 (3.2)	5.7 (2.6)	130 (39.6)
140 (42.7)				5.7 (2.6)	6.0 (2.7)	5.5 (2.5)	140 (42.7)
150 (45.7)					5.3 (2.4)	5.3 (2.4)	150 (45.7)
160 (48.8)						4.9 (2.2)	160 (48.8)

Table 3-2 Lifting capacity on SF-2 boom

Unit: kip (ton)

Main boom length ft(m)	121'5"(37)						Main boom length ft(m)
Fixed jib length ft(m)	19'8" (6)		39'4" (12)		59'1" (18)		Fixed jib length ft(m)
Radius ft(m)	Fixed jib angle (°)		Fixed jib angle (°)		Fixed jib angle (°)		Radius ft(m)
	10	30	10	30	10	30	
35 (10.7)	17.6 (8)						35 (10.7)
40 (12.2)	17.6 (8)						40 (12.2)
50 (15.2)	17.6 (8)	17.6 (8)	17.6 (8)				50 (15.2)
60 (18.3)	17.6 (8)	17.6 (8)	17.6 (8)	16.3 (7.4)	13.2 (6)		60 (18.3)
70 (21.3)	17.6 (8)	17.6 (8)	17.6 (8)	15.4 (7)	12.6 (5.7)	8.4 (3.8)	70 (21.3)
80 (24.4)	15 (6.8)	15 (6.8)	15.9 (7.2)	14.1 (6.4)	12.3 (5.6)	7.7 (3.5)	80 (24.4)
90 (27.4)	12.6 (5.7)	12.8 (5.8)	13 (5.9)	13.2 (6)	11.9 (5.4)	7.5 (3.4)	90 (27.4)
100 (30.5)	10.4 (4.7)	10.6 (4.8)	10.8 (4.9)	11.2 (5.1)	9.9 (4.5)	6.6 (3)	100 (30.5)
110 (33.5)	8.6 (3.9)	8.8 (4)	9 (4.1)	9.5 (4.3)	9.0 (4.1)	6.4 (2.9)	110 (33.5)
120 (36.6)	7.1 (3.2)	7.3 (3.3)	7.7 (3.5)	7.9 (3.6)	8.2 (3.7)	6.2 (2.8)	120 (36.6)
130 (39.6)			6.4 (2.9)	6.8 (3.1)	7.1 (3.2)	6.0 (2.7)	130 (39.6)
140 (42.7)			5.5 (2.5)	5.7 (2.6)	6 (2.7)	5.5 (2.5)	140 (42.7)
150 (45.7)					5.1 (2.3)	4.4 (2)	150 (45.7)
160 (48.8)					4.2 (1.9)	4.2 (1.9)	160 (48.8)

Table 3-2 Lifting capacity on SF-2 boom

Unit: kip (ton)

Main boom length ft(m)	131'3"(40)						Main boom length ft(m)
	19'8" (6)		39'4" (12)		59'1" (18)		
Fixed jib length ft(m)	Fixed jib angle (°)		Fixed jib angle (°)		Fixed jib angle (°)		Fixed jib length ft(m)
	10	30	10	30	10	30	
Radius ft(m)	Fixed jib angle (°)		Fixed jib angle (°)		Fixed jib angle (°)		Radius ft(m)
40 (12.2)	17.6 (8)						40 (12.2)
50 (15.2)	17.6 (8)	17.6 (8)	17.6 (8)				50 (15.2)
60 (18.3)	17.6 (8)	17.6 (8)	17.6 (8)	17.2 (7.8)	13.2 (6)		60 (18.3)
70 (21.3)	16.1 (7.3)	16.1 (7.3)	16.3 (7.4)	15.9 (7.2)	12.8 (5.8)		70 (21.3)
80 (24.4)	15 (6.8)	15.2 (6.9)	15.4 (7.0)	15.0 (6.8)	12.6 (5.7)	7.9 (3.6)	80 (24.4)
90 (27.4)	12.1 (5.5)	12.3 (5.6)	12.8 (5.8)	12.3 (5.6)	12.1 (5.5)	7.5 (3.4)	90 (27.4)
100 (30.5)	9.9 (4.5)	10.1 (4.6)	10.8 (4.9)	11.2 (5.1)	9.9 (4.5)	7.1 (3.2)	100 (30.5)
110 (33.5)	8.2 (3.7)	8.4 (3.8)	9 (4.1)	9.3 (4.2)	8.8 (4)	6.6 (3)	110 (33.5)
120 (36.6)	6.8 (3.1)	7.1 (3.2)	7.5 (3.4)	7.7 (3.5)	7.9 (3.6)	6.2 (2.8)	120 (36.6)
130 (39.6)	5.7 (2.6)	6 (2.7)	6.4 (2.9)	6.6 (3)	6.4 (2.9)	6.0 (2.7)	130 (39.6)
140 (42.7)			5.3 (2.4)	5.5 (2.5)	5.5 (2.5)	5.5 (2.5)	140 (42.7)
150 (45.7)			4.4 (2)	4.6 (2.1)	4.6 (2.1)	4.4 (2)	150 (45.7)
160 (48.8)					4 (1.8)	4.2 (1.9)	160 (48.8)
170 (51.8)					3.3 (1.5)	3.5 (1.6)	170 (51.8)

Table 3-2 Lifting capacity on SF-2 boom

Unit: kip (ton)

Main boom length ft(m)	141'2"(43)						Main boom length ft(m)
Fixed jib length ft(m)	19'8" (6)		39'4" (12)		59'1" (18)		Fixed jib length ft(m)
Radius ft(m)	Fixed jib angle (°)		Fixed jib angle (°)		Fixed jib angle (°)		Radius ft(m)
	10	30	10	30	10	30	
50 (15.2)	17.6 (8)		17.6 (8)				50 (15.2)
60 (18.3)	17.6 (8)	17.6 (8)	17.6 (8)	16.8 (7.6)	13.2 (6)		60 (18.3)
70 (21.3)	17.6 (8)	17.6 (8)	17.6 (8)	15.9 (7.2)	12.8 (5.8)		70 (21.3)
80 (24.4)	14.3 (6.5)	15 (6.8)	15.4 (7)	15.0 (6.8)	12.6 (5.7)	8.4 (3.8)	80 (24.4)
90 (27.4)	11.7 (5.3)	12.3 (5.6)	12.6 (5.7)	12.6 (5.7)	12.1 (5.5)	7.7 (3.5)	90 (27.4)
100 (30.5)	9.7 (4.4)	9.9 (4.5)	10.6 (4.8)	11 (5)	9.9 (4.5)	7.3 (3.3)	100 (30.5)
110 (33.5)	8.1 (3.7)	8.4 (3.8)	8.8 (4)	9.3 (4.2)	8.8 (4)	6.6 (3)	110 (33.5)
120 (36.6)	6.6 (3)	6.8 (3.1)	7.3 (3.3)	7.7 (3.5)	7.5 (3.4)	6.4 (2.9)	120 (36.6)
130 (39.6)	5.5 (2.5)	5.5 (2.5)	6 (2.7)	6.4 (2.9)	6.2 (2.8)	6.2 (2.8)	130 (39.6)
140 (42.7)	4.4 (2)	4.4 (2)	5.1 (2.3)	5.3 (2.4)	5.3 (2.4)	5.7 (2.6)	140 (42.7)
150 (45.7)			4.2 (1.9)	4.4 (2)	4.4 (2)	4.4 (2)	150 (45.7)
160 (48.8)			3.3 (1.5)	3.5 (1.6)	3.7 (1.7)	4.2 (1.9)	160 (48.8)
170 (51.8)					2.9 (1.3)	3.3 (1.5)	170 (51.8)
180 (54.9)						2.6 (1.2)	180 (54.9)

Table 3-2 Lifting capacity on SF-2 boom

Unit: kip (ton)

Main boom length ft(m)	150'11"(46)						Main boom length ft(m)
Fixed jib length ft(m)	19'8" (6)		39'4" (12)		59'1" (18)		Main boom length ft(m)
Radius ft(m)	Fixed jib angle (°)		Fixed jib angle (°)		Fixed jib angle (°)		Radius ft(m)
	10	30	10	30	10	30	
50 (15.2)	17.6 (8)		17.6 (8)				50 (15.2)
60 (18.3)	17.6 (8)	17.6 (8)	17.6 (8)		13.2 (6.0)		60 (18.3)
70 (21.3)	17.6 (8)	17.6 (8)	17.6 (8)	16.3 (7.4)	12.8 (5.8)		70 (21.3)
80 (24.4)	14.3 (6.5)	14.8 (6.7)	14.8 (6.7)	15.4 (7)	12.6 (5.7)	8.4 (3.8)	80 (24.4)
90 (27.4)	11.7 (5.3)	12.1 (5.5)	12.6 (5.7)	13.0 (5.9)	11.2 (5.1)	7.7 (3.5)	90 (27.4)
100 (30.5)	9.7 (4.4)	9.9 (4.5)	10.1 (4.6)	10.8 (4.9)	9.9 (4.5)	7.5 (3.4)	100 (30.5)
110 (33.5)	7.9 (3.6)	7.9 (3.6)	8.6 (3.9)	8.8 (4)	8.8 (4)	6.8 (3.1)	110 (33.5)
120 (36.6)	6.4 (2.9)	6.6 (3)	7.1 (3.2)	7.3 (3.3)	7.3 (3.3)	6.6 (3)	120 (36.6)
130 (39.6)	5.3 (2.4)	5.3 (2.4)	5.7 (2.6)	6.2 (2.8)	6.2 (2.8)	6.4 (2.9)	130 (39.6)
140 (42.7)	4.2 (1.9)	4.4 (2)	4 (2.2)	5.1 (2.3)	5.1 (2.3)	5.1 (2.3)	140 (42.7)
150 (45.7)			3.1 (1.8)	4.2 (1.9)	4.2 (1.9)	4.6 (2.1)	150 (45.7)
160 (48.8)			3.1 (1.4)	3.3 (1.5)	3.3 (1.5)	4 (1.8)	160 (48.8)
170 (51.8)			2.4 (1.1)	2.6 (1.2)	2.6 (1.2)	3.3 (1.5)	170 (51.8)
180 (54.9)					2.2 (1)	2.4 (1.1)	180 (54.9)
190 (57.9)					1.5 (0.7)	1.8 (0.8)	190 (57.9)

Table 3-2 Lifting capacity on SF-2 boom

Unit: kip (ton)

Main boom length ft(m)	160'10"(49)						Main boom length ft(m)
Fixed jib length ft(m)	19'8" (6)		39'4" (12)		59'1" (18)		Fixed jib length ft(m)
Radius ft(m)	Fixed jib angle (°)		Fixed jib angle (°)		Fixed jib angle (°)		Radius ft(m)
	10	30	10	30	10	30	
50 (15.2)	17.6 (8)	17.6 (8)	17.6 (8)				50 (15.2)
60 (18.3)	17.6 (8)	17.6 (8)	17.6 (8)		13.2 (6.0)		60 (18.3)
70 (21.3)	15.9 (7.2)	16.1 (7.3)	16.1 (7.3)	16.8 (7.6)	12.8 (5.8)		70 (21.3)
80 (24.4)	14.6 (6.6)	14.6 (6.6)	14.8 (6.7)	15.4 (7)	12.6 (5.7)	8.4 (3.8)	80 (24.4)
90 (27.4)	11.5 (5.2)	11.7 (5.3)	11.9 (5.4)	13 (5.9)	11 (5)	8.2 (3.7)	90 (27.4)
100 (30.5)	9.3 (4.2)	9.5 (4.3)	9.7 (4.4)	10.6 (4.8)	9.9 (4.5)	7.7 (3.5)	100 (30.5)
110 (33.5)	7.5 (3.4)	7.7 (3.5)	8.2 (3.7)	8.6 (3.9)	8.4 (3.8)	7.3 (3.3)	110 (33.5)
120 (36.6)	6.2 (2.8)	6.4 (2.9)	6.6 (3)	7.3 (3.3)	7.1 (3.2)	6.6 (3)	120 (36.6)
130 (39.6)	5.1 (2.3)	5.1 (2.3)	5.5 (2.5)	6 (2.7)	5.7 (2.6)	6.4 (2.9)	130 (39.6)
140 (42.7)	4 (1.8)	4.2 (1.9)	4.4 (2)	4.9 (2.2)	4.6 (2.1)	5.1 (2.3)	140 (42.7)
150 (45.7)	3.1 (1.4)	3.3 (1.5)	3.5 (1.6)	4 (1.8)	3.7 (1.7)	4.6 (2.1)	150 (45.7)
160 (48.8)	2.2 (1)	2.4 (1.1)	2.9 (1.3)	3.1 (1.4)	3.1 (1.4)	3.7 (1.7)	160 (48.8)
170 (51.8)				2.4 (1.1)	2.4 (1.1)	3.1 (1.4)	170 (51.8)
180 (54.9)					1.7 (0.8)	2.4 (1.1)	180 (54.9)
190 (57.9)						1.5 (0.7)	190 (57.9)

Table 3-2 Lifting capacity on SF-2 boom

Unit: kip (ton)

Main boom length ft(m)	170'8"(52)						Main boom length ft(m)
Fixed jib length ft(m)	19'8" (6)		39'4" (12)		59'1" (18)		Fixed jib length ft(m)
Radius ft(m)	Fixed jib angle (°)		Fixed jib angle (°)		Fixed jib angle (°)		Radius ft(m)
	10	30	10	30	10	30	
50 (15.2)	17.6 (8)						50 (15.2)
60 (18.3)	17.6 (8)	17.6 (8)	17.6 (8)				60 (18.3)
70 (21.3)	15.9 (7.2)	16.1 (7.3)	16.1 (7.3)	16.8 (7.6)	13.2 (6)		70 (21.3)
80 (24.4)	13.9 (6.3)	14.1 (6.4)	14.6 (6.6)	14.1 (6.4)	12.8 (5.8)	8.4 (3.8)	80 (24.4)
90 (27.4)	11 (5)	11.7 (5.3)	11.7 (5.3)	12.1 (5.5)	11.2 (5.1)	8.2 (3.7)	90 (27.4)
100 (30.5)	9 (4.1)	9.5 (4.3)	9.5 (4.3)	10.4 (4.7)	9.9 (4.5)	7.5 (3.4)	100 (30.5)
110 (33.5)	7.3 (3.3)	7.7 (3.5)	7.7 (3.5)	8.4 (3.8)	8.2 (3.7)	7.3 (3.3)	110 (33.5)
120 (36.6)	5.7 (2.6)	6.2 (2.8)	6.6 (3)	7.1 (3.2)	6.5 (3.1)	6.6 (3)	120 (36.6)
130 (39.6)	4.6 (2.1)	4.9 (2.2)	5.3 (2.4)	5.8 (2.6)	5.5 (2.5)	5.3 (2.4)	130 (39.6)
140 (42.7)	3.7 (1.7)	3.7 (1.7)	4.4 (2)	4.6 (2.1)	4.6 (2.1)	5.1 (2.3)	140 (42.7)
150 (45.7)	2.9 (1.3)	3.1 (1.4)	3.5 (1.6)	3.7 (1.7)	3.7 (1.7)	4.4 (2)	150 (45.7)
160 (48.8)	2 (0.9)	2.2 (1)	2.6 (1.2)	2.9 (1.3)	2.9 (1.3)	3.5 (1.6)	160 (48.8)
170 (51.8)		1.5 (0.7)	2 (0.9)	2.2 (1)	2.2 (1)	2.9 (1.3)	170 (51.8)
180 (54.9)				1.5 (0.7)	1.5 (0.7)	2 (0.9)	180 (54.9)

Table 3-2 Lifting capacity on SF-2 boom

Unit: kip (ton)

Main boom length ft(m)	180'5"(55)				Main boom length ft(m)
Fixed jib length ft(m)	19'8" (6)		39'4" (12)		Fixed jib length ft(m)
Radius ft(m)	Fixed jib angle (°)		Fixed jib angle (°)		Radius ft(m)
	10	30	10	30	
50 (15.2)	17.6 (8)				50 (15.2)
60 (18.3)	17.6 (8)	17.6 (8)	17.6 (8)		60 (18.3)
70 (21.3)	15.9 (7.2)	16.1 (7.3)	16.1 (7.3)	15.7 (7.1)	70 (21.3)
80 (24.4)	13.2 (6.0)	13.9 (6.3)	14.3 (6.5)	14.8 (6.7)	80 (24.4)
90 (27.4)	10.8 (4.9)	11.2 (5.1)	11.2 (5.1)	12.3 (5.6)	90 (27.4)
100 (30.5)	8.8 (4)	9.0 (4.1)	9 (4.1)	10.1 (4.6)	100 (30.5)
110 (33.5)	7.1 (3.2)	7.3 (3.3)	7.5 (3.4)	8.4 (3.8)	110 (33.5)
120 (36.6)	5.5 (2.5)	6 (2.7)	6 (2.7)	6.8 (3.1)	120 (36.6)
130 (39.6)	4.4 (2)	4.6 (2.1)	4.8 (2.2)	5.5 (2.5)	130 (39.6)
140 (42.7)	3.3 (1.5)	3.5 (1.6)	4 (1.8)	4.4 (2)	140 (42.7)
150 (45.7)	2.6 (1.2)	2.6 (1.2)	3.1 (1.4)	3.5 (1.6)	150 (45.7)
160 (48.8)	1.8 (0.8)	1.8 (0.8)	2.4 (1.1)	2.6 (1.2)	160 (48.8)
170 (51.8)			1.8 (0.8)	1.7 (0.8)	170 (51.8)



Lifting Capacity Chart for Crawler Crane

Chapter 4 Lifting Capacity on S-3 Boom



Table 4-1 Lifting capacity on S-3 boom

Unit: kip (ton)

Radius ft(m)	Main boom length ft(m)									Radius ft(m)
	42'8" (13)	52'6" (16)	62'4" (19)	72'3" (22)	82' (25)	91'11" (28)	101'9" (31)	111'6" (34)	121'5" (37)	
14 (4.3)	17.6 (8)									14 (4.3)
15 (4.6)	17.6 (8)									15 (4.6)
16 (4.9)	17.6 (8)	17.6 (8)								16 (4.9)
17 (5.2)	17.6 (8)	17.6 (8)								17 (5.2)
18 (5.5)	17.6 (8)	17.6 (8)	17.6 (8)							18 (5.5)
19 (5.8)	17.6 (8)	17.6 (8)	17.6 (8)							19 (5.8)
20 (6.1)	17.6 (8)	17.6 (8)	17.6 (8)	17.6 (8)						20 (6.1)
25 (7.6)	17.6 (8)	17.6 (8)	17.6 (8)	17.6 (8)	17.6 (8)	17.6 (8)	17.6 (8)			25 (7.6)
30 (9.1)	17.6 (8)	17.6 (8)	17.6 (8)	17.6 (8)	17.6 (8)	17.6 (8)	17.6 (8)	17.6 (8)	17.6 (8)	30 (9.1)
35 (10.7)	17.6 (8)	17.6 (8)	17.6 (8)	17.6 (8)	17.6 (8)	17.6 (8)	17.6 (8)	17.6 (8)	17.6 (8)	35 (10.7)
40 (12.2)	17.6 (8)	17.6 (8)	17.6 (8)	17.6 (8)	17.6 (8)	17.6 (8)	17.6 (8)	17.6 (8)	17.6 (8)	40 (12.2)
50 (15.2)	17.6/45 (8/13.7)	17.6 (8)	17.6 (8)	17.6 (8)	17.6 (8)	17.6 (8)	17.6 (8)	17.6 (8)	17.6 (8)	50 (15.2)
60 (18.3)		17.6/55 (8/16.8)	17.6 (8)	17.6 (8)	17.6 (8)	17.6 (8)	17.6 (8)	17.6 (8)	17.6 (8)	60 (18.3)
70 (21.3)			17.6 (8)	17.6 (8)	17.6 (8)	17.6 (8)	17.6 (8)	17.6 (8)	17.6 (8)	70 (21.3)
80 (24.4)					17.6 (8)	16.1 (7.3)	15.9 (7.2)	15.6 (7.1)	15.3 (7)	80 (24.4)
90 (27.4)						14.3/85 (6.5/25.9)	13.2 (6)	12.8 (5.8)	12.8 (5.8)	90 (27.4)
100 (30.5)							11.9/95 (5.4/29)	10.6 (4.8)	10.6 (4.8)	100 (30.5)
110 (33.5)								9.3/105 (4.2/32)	8.8 (4)	110 (33.5)
120 (36.6)									7.9/115 (3.6/35)	120 (36.6)

Table 4-1 Lifting capacity on S-3 boom

Unit: kip (ton)

Radius ft(m)	Main boom length ft(m)								Radius ft(m)
	131'3" (40)	141'2" (43)	150'11" (46)	160'10" (49)	170'8" (52)	180'5" (55)	190'4" (58)	200'2" (61)	
30 (9.1)	17.6 (8)								30 (9.1)
35 (10.7)	17.6 (8)	17.6 (8)	17.6 (8)	17.6 (8)					35 (10.7)
40 (12.2)	17.6 (8)	17.6 (8)	17.6 (8)	17.6 (8)	17.6 (8)	17.6 (8)	17.6 (8)		40 (12.2)
50 (15.2)	17.6 (8)	17.6 (8)	17.6 (8)	17.6 (8)	17.6 (8)	17.6 (8)	17.6 (8)	17.6 (8)	50 (15.2)
60 (18.3)	17.6 (8)	17.6 (8)	17.6 (8)	17.6 (8)	17.6 (8)	17.6 (8)	17.6 (8)	17.6 (8)	60 (18.3)
70 (21.3)	17.6 (8)	17.6 (8)	17.6 (8)	17.6 (8)	17.6 (8)	17.6 (8)	17.6 (8)	17.6 (8)	70 (21.3)
80 (24.4)	15.2 (6.9)	14.9 (6.8)	14.7 (6.7)	14.5 (6.6)	14.3 (6.5)	14.1 (6.4)	13.9 (6.3)	13.7 (6.2)	80 (24.4)
90 (27.4)	12.5 (5.7)	12.3 (5.6)	12.1 (5.5)	11.9 (5.4)	11.7 (5.3)	11.2 (5.1)	11 (5)	10.8 (4.9)	90 (27.4)
100 (30.5)	10.3 (4.7)	10.1 (4.6)	9.9 (4.5)	9.7 (4.4)	9.3 (4.2)	9 (4.1)	8.8 (4)	8.6 (3.9)	100 (30.5)
110 (33.5)	8.8 (4)	8.4 (3.8)	8.2 (3.7)	8.2 (3.7)	7.7 (3.5)	7.5 (3.4)	7.1 (3.2)	6.9 (3.1)	110 (33.5)
120 (36.6)	7.1 (3.2)	6.8 (3.1)	6.6 (3)	6.4 (2.9)	6.2 (2.8)	6 (2.7)	5.7 (2.6)	5.5 (2.5)	120 (36.6)
130 (39.6)		5.3 (2.4)	5.3 (2.4)	5.3 (2.4)	5.3 (2.4)	4.6 (2.1)	4.4 (2)	4.2 (1.9)	130 (39.6)
140 (42.7)			4.2 (1.9)	4.2 (1.9)	4 (1.8)	3.8 (1.7)	3.6 (1.6)	3.4 (1.5)	140 (42.7)
150 (45.7)				3.5/145 (1.6/44.2)	3.1 (1.4)	2.9 (1.3)	2.7 (1.2)	2.5 (1.1)	150 (45.7)
160 (48.8)					2.6/155 (1.2/47.3)	2.2 (1)	2 (0.9)	1.8 (0.8)	160 (48.8)



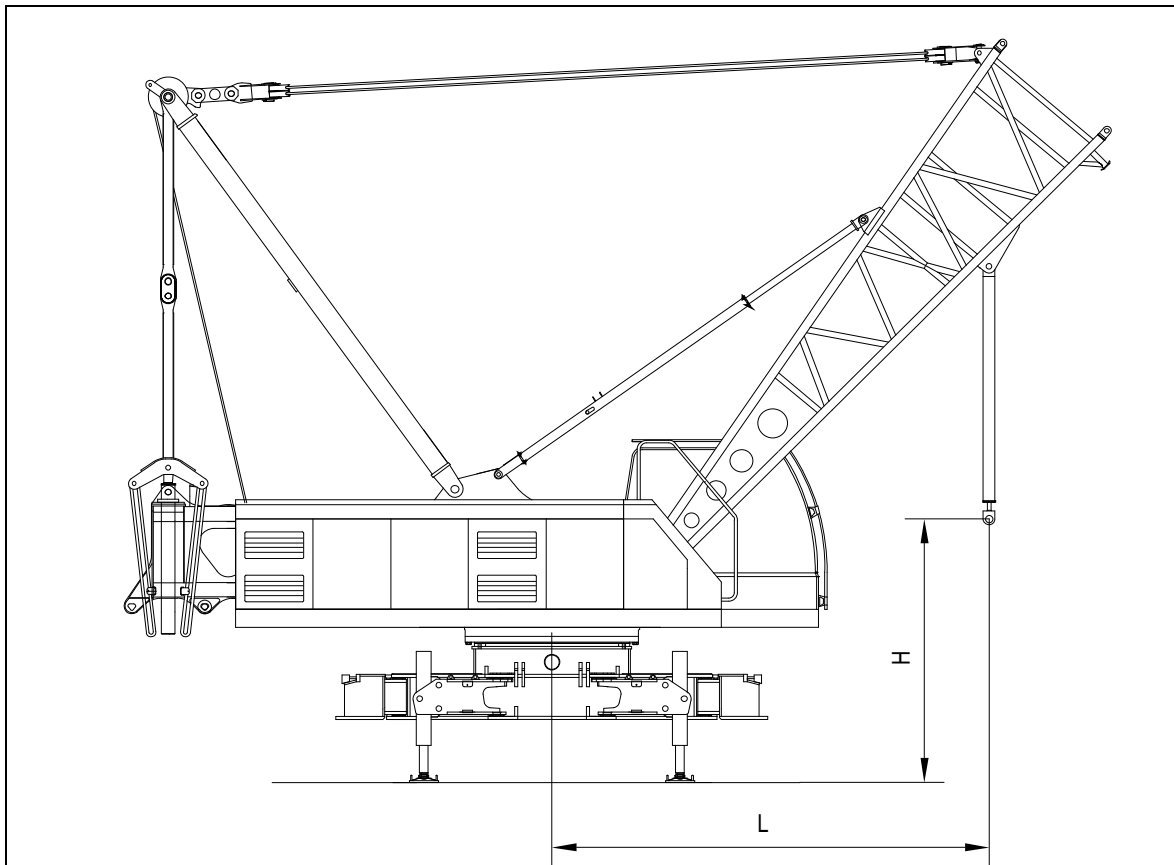
Lifting Capacity Chart for Crawler Crane

Chapter 5 Lifting Capacity on SA Boom



Table 5-1 Lifting capacity on SA boom

Radius (L) ft (m)	Ground clearance (H) ft (m)	Main boom angle (°)	Load capacity kip (t)
7' (2.15)	12'10" (3.9)	84	26.4 (12)
8'2" (2.5)	12'6" (3.8)	79.6	26.4 (12)
9'10" (3)	11'10" (3.6)	73	26.4 (12)
11'5" (3.5)	10'10" (3.3)	66	26.4 (12)
13'1" (4)	9'10" (3.0)	58.5	24.2 (11)
14'9" (4.5)	8'2" (2.5)	50	22 (10)
16'5" (5)	5'11" (1.8)	39.8	20.9 (9.5)
18' (5.5)	5'7" (1.7)	24.9	18.7 (8.5)



Note:

L is the radius of boom in assembly mode, and H is the ground clearance of mounting cylinder when it is retracted fully.

Figure 5-1 Assembly mode